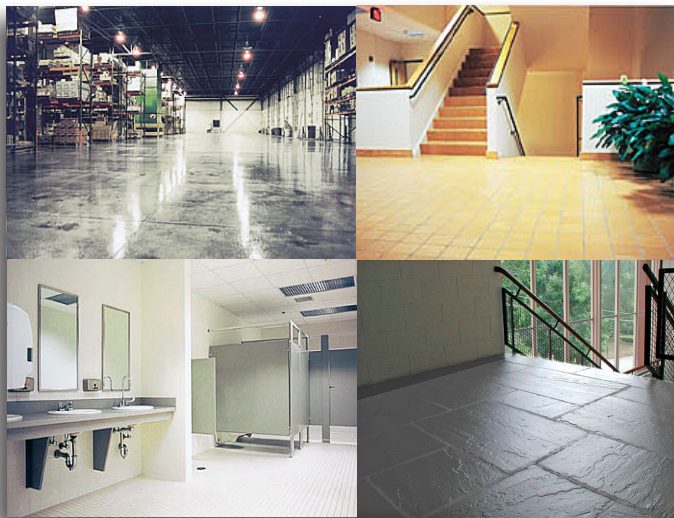


Prepare

Acid Etching And Bleaching Treatment For Concrete and Ceramic Tile

Prepare is a concentrated formulation containing hydrochloric (muriatic) acid, detergents, and surfactants for use in preparing concrete, terrazzo, and unglazed stone or ceramic tile flooring for coating with water or solvent-based sealers. *Prepare's* powerful chemical reaction dissolves ground-in dust and dirt, opening up the pores in smooth mineral surfaces, and insuring proper adhesion characteristics between the flooring and sealer. This treatment can also enhance slip resistance characteristics on particularly smooth masonry or stone surfaces.



APPLICATION & MAINTENANCE

CAUTION: This is a concentrated product formulated for professional use only! Safety glasses, gloves, and protective footwear should be worn at all times during application. Provide for adequate ventilation of fumes which may be generated during application. In enclosed areas with limited ventilation a respirator may be necessary. High concentrations of vapor due to limited ventilation can also cause flash rusting of stainless steel. Do not mix this product with other chemicals. **NOTE: Prepare should be used with extreme caution on polished surfaces and marble, terrazzo, limestone, or other calcium containing materials. Prepare will remove the gloss from polished surfaces and will etch and possibly damage soft or high calcium content stones.**

Uniformly dampen the area to be treated with clean water. For light to moderate soil or staining on ceramic tile or stone, dilute *Prepare* 43 ozs. cleaner to 1 gallon (128 ozs.) of cold water (1:3). For heavy soil or staining, or for etching concrete prior to coating, *Prepare* may be concentrated up to 1:1 parts cleaner to cold water. **NOTE:** Concentrations of *Prepare* at 1:1 or higher can cause efflorescence in grout lines which should be removed by scrubbing with hot water and a deck brush or a 175-300 rpm buffing machine equipped with a brush prior to sealing. Apply solution to the floor using a plastic watering can, then spread evenly using a deck brush or synthetic fiber mop. Allow the solution to work for approximately 5 minutes or until white foaming action ceases. Scrub the application area with a buffing machine equipped with a staggered bristle zim-grit or nylo-grit type brush or deck brush, to assist in thorough cleaning. Completely remove the etching solution, preferably with a wet vacuum. Rinse by applying clean water liberally with a watering can or mop. Scrub briefly to agitate rinse water. Remove rinse water with a wet vacuum or mop. Thoroughly rinse all application equipment with clean water. Coverage: Approximately 250 ft²/gallon of diluted solution.

SPECIFICATIONS

Active Ingredients	Combination of Hydrogen Chloride, Sulfuric Acid, Isopropyl Alcohol
pH	1 - 3
Free Ammonia	None
Free Alkali	None
Free Acid	23.8%
Phosphates	None
Abrasives	None
Color	Milky Blue
Odor	Sassafras
Solubility in Water	100%
Freeze/Thaw Stability	3 cycles
Shelf Life	1 year min. (30° F.-125° F.)
Flash Point	None
Weight Per Gallon	8.4 - 8.8
Biodegradable	Yes
Soil Suspension	N/A

SAFETY INFORMATION

Health	2
Flammability	0
Reactivity	1
Personal Protection	C

Read Safety Data Sheet thoroughly before using.

CORROSIVE DANGER: Harmful or Fatal if Swallowed, Causes Chemical Burns.



Contains Hydrochloric Acid CAS #7647-01-0, Sulfuric Acid CAS#7664-93-9, Isopropyl Alcohol CAS#67-63-0.

Avoid contact with skin, eyes, and clothing. Wear eye protection, gloves and protective clothing during use. Do not ingest. **In case of eye contact:**

Flush thoroughly with water for 15 minutes. Get immediate medical treatment. **In case of skin contact:** Wash thoroughly with soap and water. If irritation persists, get medical aid. **If ingested:** Do not induce vomiting. Get immediate medical attention.



605 Springs Road, Bedford, MA 01730 USA
Tel: 978.667.5161, Fax: 978.670.5797
E-mail: Info@perma.com
www.perma.com